



INSTALLATION OF ROXY™ INSTRUMENT CONTROL DRIVERS FOR THERMO SCIENTIFIC XCALIBUR™ SOFTWARE – BETA VERSION

Thermo Scientific Xcalibur™ software is a flexible Windows-based data system that provides instrument control and data analysis for the entire family of Thermo Scientific mass spectrometers and related instruments. Thermo Fisher Scientific empowers third-party equipment manufacturers to write VI (Virtual Instrument) software for their equipment for seamless integration with Xcalibur.

Antec released a beta-version of the ROXY VI instrument control drivers for Xcalibur for control and data acquisition of the ROXY EC and ROXY EC/LC system. These drivers are compatible with Xcalibur version 2.0.7 and 2.1 under the Windows XP operating system (OS) with service pack 3. The drivers are not tested with other Xcalibur versions & Windows OS (Windows 7) and installation may result in unstable operation or not work at all in that case. Note that the ROXY Xcalibur drivers are copy protected and can only be used in combination with a **USB license key dongle** which can be purchased from Antec. The license key dongle will unlock the software and will allow data-acquisition with the ROXY instruments. The CD-ROM contains the ROXY instrument control drivers only and not the Thermo Scientific Xcalibur data system software. For support on the ROXY instrument drivers contact Antec (see contact details in the footer of this document). The drivers contain an online help section which can be opened with the F1 short-key, ? button or from the pull down menu when the software is running.

The Xcalibur data system software should be ordered from Thermo Scientific. For ordering & support for the Xcalibur software please contact Thermo Scientific:

To contact Technical Support

Phone +1 800-532-4752, Fax +1 561-688-8736
E-mail us.techsupport.analyze@thermofisher.com
Knowledge base www.thermokb.com
Find software updates and utilities to download at
www.mssupport.thermo.com

To contact Customer Service for ordering information

Phone +1 800-532-4752, Fax + 1 561-688-8731
E-mail us.customersupport.analyze@thermofisher.com
Web site www.thermo.com/ms

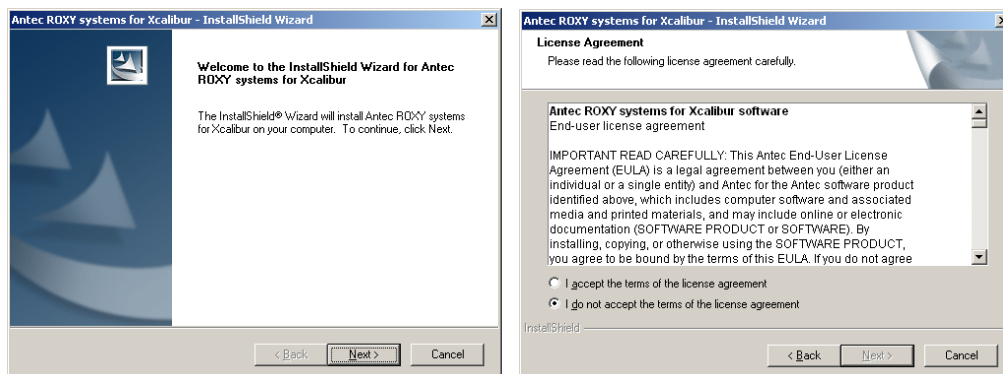
System	Minimum Requirements (Xcalibur 2.1)*
PC	2 GHz processor with 512 MB RAM CD-ROM drive, free USB slot Resolution display 1280x1024 (XGA) 75 GB C: drive NTFS format
Software	Windows™ XP with Service Pack 3 Microsoft™ Office 2003 or 2007 (Thermo Scientific software) Thermo Foundation 1.0

*) To connect a ROXY EC or ROXY EC/LC system additionally 2 and 4 RS232 com ports are required, respectively.

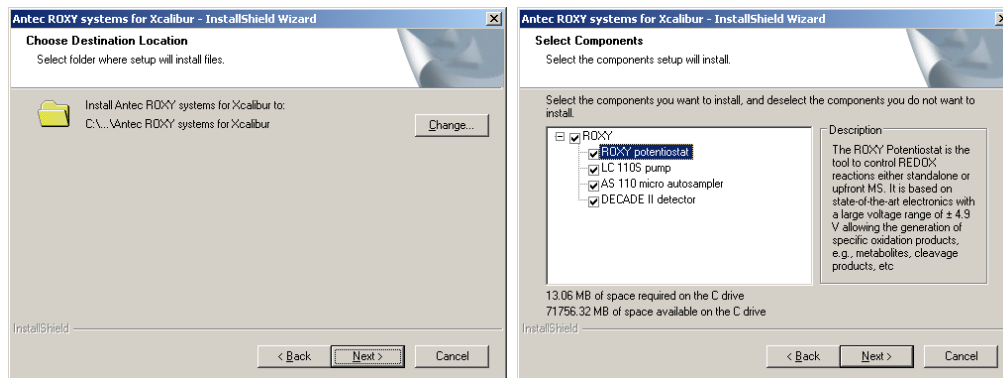


Installation

- First, Xcalibur 2.0.7 SP 1 must be installed from the “Xcalibur 2.0.7 SP 1 installation Disc”. Please refer to the Xcalibur 2.0.7 SP 1 installation guide to install Xcalibur 2.0.7 SP 1. In case of Xcalibur version 2.1 first install Thermo foundation 1.0 and subsequently Xcalibur 2.1.
- Run the installation executable named Xcalibur-ROXY_2.1.0.xx.exe to start the installation of the ROXY instrument drivers. The following window (left) will open:



- Click next to open the license agreement, accept the terms and click next to continue the installation.
- In the next window the destination location where the drivers will be installed can be chosen. Click next to install into the default destination or change it if required.



- Select the components to be installed and click next.
- Click install to start the actual installation of the components.
- After the installation is completed click finish to exit the installation wizard.
- Make sure to install the USB license dongle in a free USB slot.
- The ROXY instrument drivers are now ready for use in Xcalibur.

Copyright ©2011, Antec, The Netherlands. ROXY™ is a trademark of Antec. Microsoft® and Windows™ are trademarks of Microsoft Corporation. Xcalibur™ is a trademark of Thermo Scientific. The information contained in this document is subject to change without notice. Antec shall not be liable for errors contained herein or for incidental or consequential damages in connection with the furnishing, performance, or use of software or this manual. All use of the software shall be entirely at the user's own risk.
